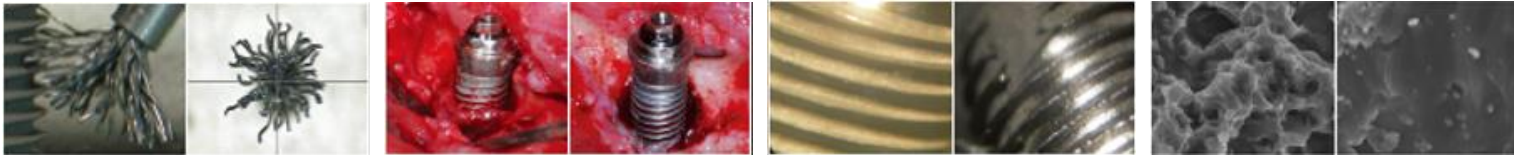


NiTi Brush

for Peri-implantitis !!!



Sterile 134°C, 15 minutes / Using implant motor RPM 600 – 1,200 / Enough water irrigation / Single time use only



Model Name : NiTi Brush POCKET
Regular wide brush for general use

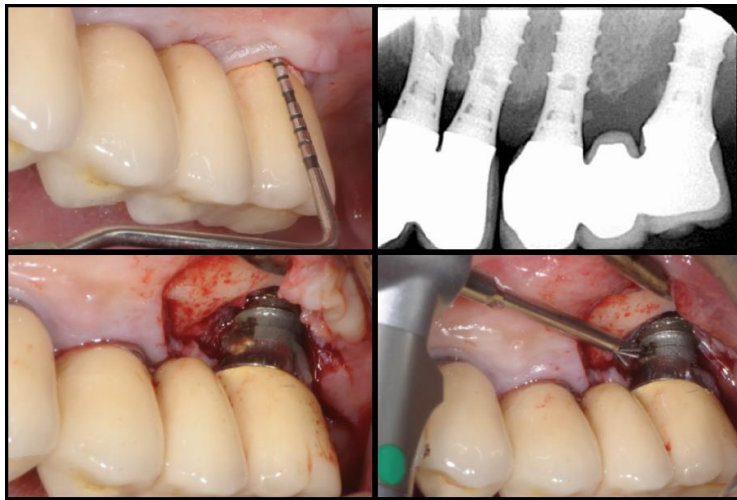


Model Name : NiTi Brush NANO
Narrow brush for only one thread open

NiTi Brush

Global Standard of periimplantitis treatment protocol

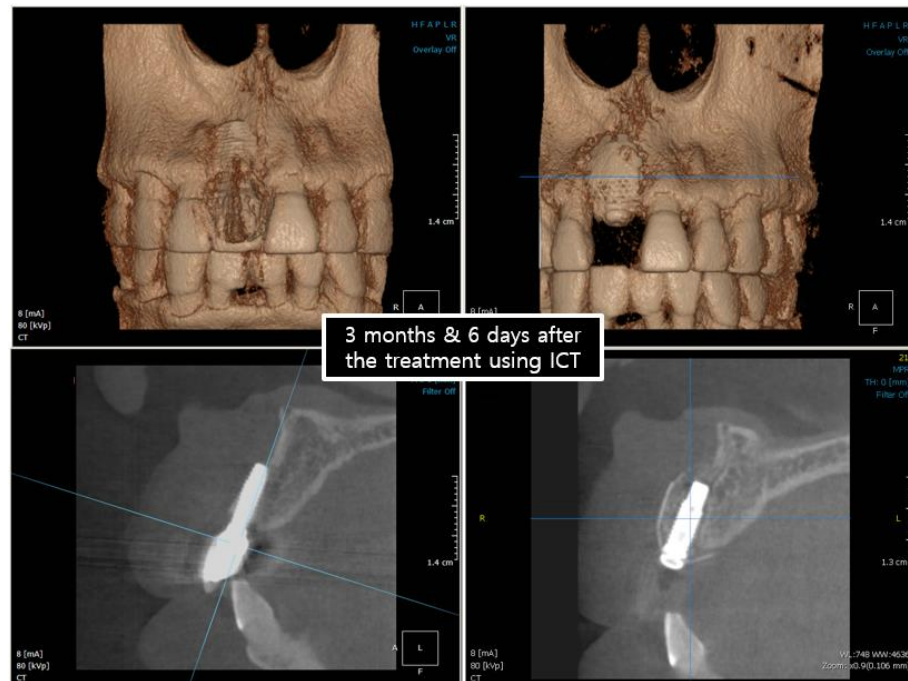
Clinical case presented by Dr. Mario Rocuzzo (Italy)



NiTi Brush

Global Standard of periimplantitis treatment protocol

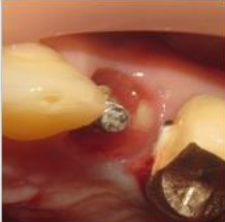
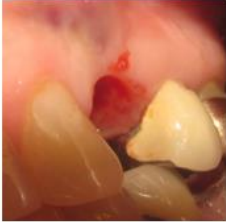










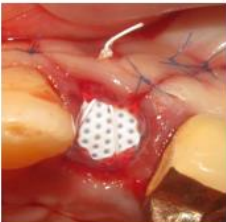

Presented by Prof. Baek-Soo, Lee
Department of Oral & Maxillofacial Surgery
Kyung-Hee University, Seoul , Korea



NiTi Brush

Global Standard of periimplantitis treatment protocol



				
Remove Crown	Remove Abutment	Check the pocket	Flap open	Using ICT
				
Clean the Implant surface	First step of cleaning	During cleaning	After cleaning	GBR
				
GBR				

Presented by
Dr. Frederick Li
Vancouver
Canada



NiTi Brush

Global Standard of periimplantitis treatment protocol

Presented by Dr. Frederick Li (Vancouver, Canada)

