

CE 2195



NiTi Brush Omega for peri-implantitis

싹쓸이

임플란트주위염, NiTi Brush-싹쓸이로 싹~~~~악 쓸어버리세요

Protocol of periimplantitis treatment using NiTi Brush

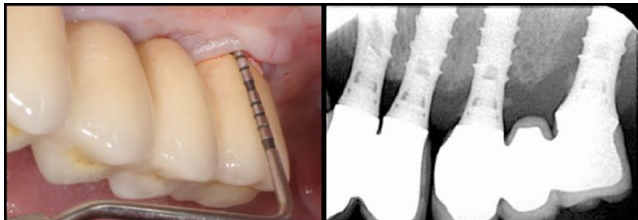
Presented by HANS Korea Co., Ltd. www.NiTiBrush.com info@nitibrush.com

1. Check up the periimplantitis.
 2. Sterile the NiTi Brush.
 3. Attach the NiTi Brush to handpiece.
 4. Brushing – mechanical treatment.
 5. **Check up the mechanical debridement by naked eyes.**
 6. **Chemical treatment.**
 7. Guided Bone Regeneration.
 8. Final check of periimplantitis treatment.
- ※ NiTi Brush + laser or sandblast?

Protocol of periimplantitis treatment using NiTi Brush

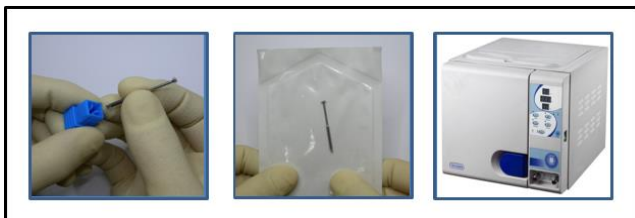
Presented by HANS Korea Co., Ltd. www.NiTiBrush.com info@nitibrush.com

1. Check up the periimplantitis.



Check up the periimplantitis using probe and possible any solution.

2. Sterile the NiTi Brush.



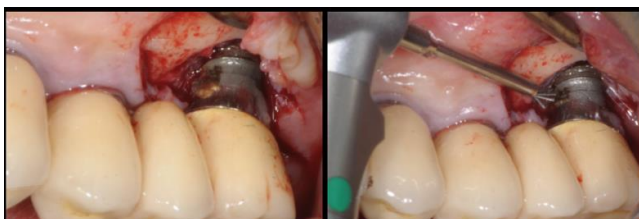
Before use, **sterile** the NiTi Brush using sterile pouch & autoclave
134 °C / 15 minutes

3. Attach the NiTi Brush to handpiece.



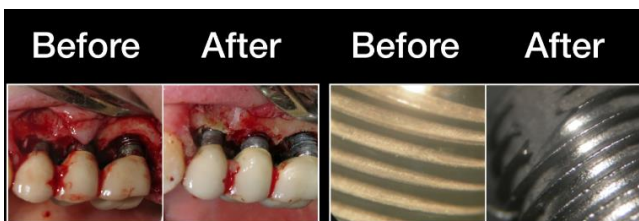
Attach the NiTi Brush to **handpiece(20:1)**
Prepare **external water irrigation**

4. Brushing – mechanical treatment.



Using implant motor, **RPM 600~1,200**, brushing the implant surface & Remove osseous defect of plaque, calculus or any other materials.
Rinse extensively with sterile saline solution throughout the whole brushing time

5. Check up the mechanical debridement by naked eyes.



Check & confirm the change of shade of implant surface by naked eyes.
The shade of **implant surface** changed into “shiny”

Protocol of periimplantitis treatment using NiTi Brush

Presented by HANS Korea Co., Ltd. www.NiTiBrush.com info@nitibrush.com

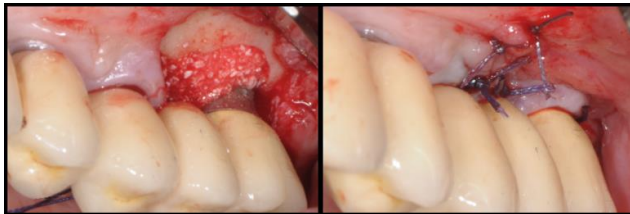
6. Chemical treatment : Various chemical treatment could be helpful for better result.

After brushing, citric acid or(and) tetracycline could be helpful for detoxification and better result.

Example) Using Citric acid Ph=1, do the burnish for 3 minutes then wash it away(can be skipped).

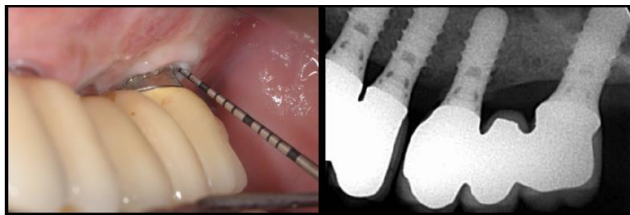
Prepare **Tetracycline 250mg placed in 2.5cc water** then apply or sprinkle it to cleaned area using syringe and **wait 3 minute, then wash away.**

7. Guided Bone Regeneration.



Guided Bone Regeneration according to the general protocol.

8. Final check of periimplantitis treatment using by NiTi Brush.



Final check of periimplantitis after treatment.

※ NiTi Brush + laser or sandblast?

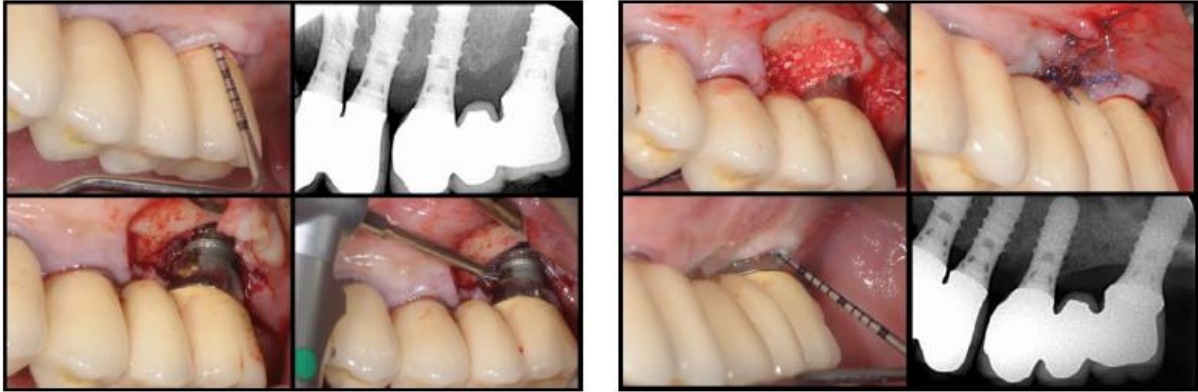
For better result, **laser or sandblast can be used together with NiTi Brush**, but laser or sandblast must be used prior to use the NiTi Brush. **NiTi Brush must be used as the last mechanical treatment process.**

※ NiTi Brush is Single time use only(disposable).

Clinical cases for peri-implantitis using the NiTi Brush

Presented by HANS Korea Co., Ltd. www.NiTiBrush.com info@nitibrush.com

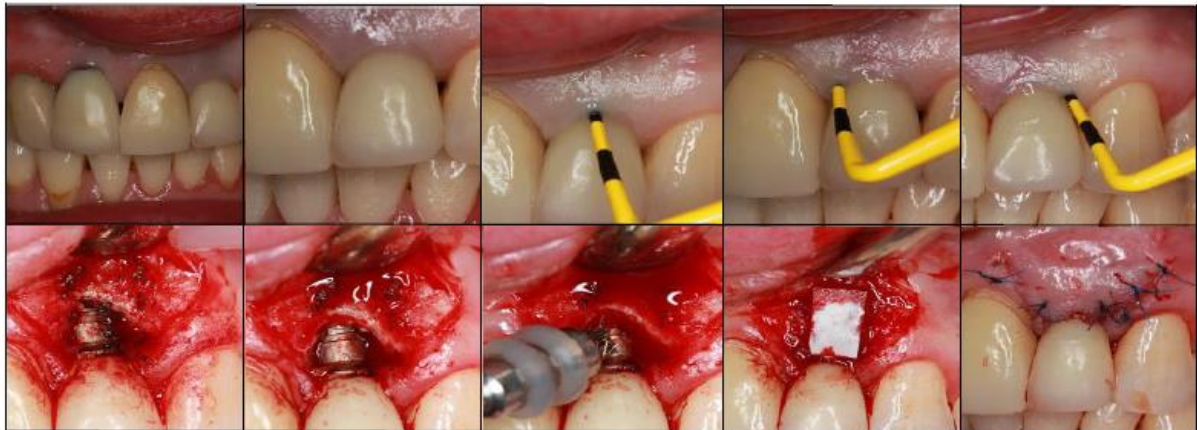
Clinical case presented by Dr. Mario Rocuzzo (Italy)



Presented by Prof. Baek-Soo, Lee
Department of Oral & Maxillofacial Surgery
Kyung-Hee University, Seoul, Korea



Presented by Dr. Frederick Li (Vancouver, Canada)



[Intended Use]

NiTi Brush for peri-implantitis is intended for mechanical debridement and cleaning of titanium dental implant surface contaminated by osseous defect of plaque, calculus or any other foreign body materials resulted from peri-implantitis, and NiTi Brush for peri-implantitis is designed for use in dental office by dentists, dental hygienists and trained dental assistants.

[Indication] : Peri-implantitis disease

[Side Effects] : Redness, Discomfort, Swelling

[Contraindications]

- It is contraindicated in young patient with poor attention and it can't be used in non-implant surgery patients.
- Usage of the device for pregnant, pediatric or elder patient, there is no safety information, please consult to specialist

[Patient Population]

- Ages : adult
- Weight : Multiple
- Race : Multiple
- Patient condition : The NiTi Brush is used for patients who have dental implants.

[Intended Operator]

- Education : Expert trained who can use this medical device.
- Knowledge : Medical Knowledge
 - a) Read and understand 'westernized Arabic' numerals when written in Calibri font
 - b) Can distinguish: left arm, right arm
 - c) Understand hygiene
- Language : English or German (Languages offered in the instruction for use)
- Experience : Use by dentists, dental hygienists and trained dental assistants

[Checklist before Use]

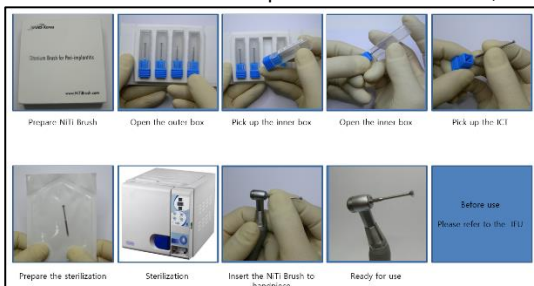
- Recommended temperature for operation room is 15°C~30°C.
- The reactions of patient against or incompatibility with titanium or nickel.
- Visual inspection for breakage of package.
- Visually inspect the damage, breakage, deformation, pollution from any foreign material in NiTi Brush
- Sterilization method.
- Preparing recommended handpiece for NiTi Brush.
- Preparing sterile saline solution(NaCl) for irrigation and cooling.
- Preparing 3% hydrogen peroxide solution for the multiple use in one patient using one NiTi Brush
- Understanding of instruction for use.

[How to Use]

- Open the outer box and pick the inner plastic box up.
- Open the inner plastic box and pick the NiTi Brush up
- Inspect the NiTi Brush for defects
- Pack the NiTi brush into the sterilization pouch
- Sterilize the NiTi Brush using autoclave.
- Attach the NiTi Brush in sterilized handpiece.
- Position the NiTi Brush to clean the targeted dental implant then clean the dental implant.
- Rinse extensively with sterile saline solution throughout the whole brushing time.
- In case of multiple use in one patient using one NiTi Brush, it is recommended to immerse the NiTi Brush in a 3% hydrogen peroxide solution and rinse with sterile saline before clean or debride another implant.

[How to connect between NiTi brush and Dental Handpiece]

- Recommended handpiece for NiTi Brush is the CE marked rotating low speed handpiece.
- Any handpiece that has the deceleration rate of "20:1" is recommended.
- Recommended RPM for operation is 600RPM ~ 1,200RPM.



[Caution]

- Only use by dentist or dental hygienist and trained dental assistants

[Warning]

- NiTi Brush must not be used in patients reporting reactions against or incompatibility with titanium or nickel.
- Do not use the brush in the broken inner plastic box.



- In case of damage, breakage, deformation, pollution from any foreign material in NiTi Brush, do not use it.
- NiTi Brush is non-sterile product.
- NiTi Brush must be sterilized according to the sterilization method & condition of instruction for use.
- After sterilization, use the NiTi Brush without re-packing or re-storage.
- Because of the risk for cross infection from patient to patient, NiTi Brush should be discarded after use.
- NiTi Brush is for single-use only. Do not re-use the NiTi Brush.
- Do not use if expiration date has been exceeded.
- NiTi Brush must be used in accordance with the instructions for use provided by the manufacturer.

[Sterilization Method & Condition]

- Preparing the sterilization of NiTi Brush and sterile the NiTi Brush in accordance with bellow condition.
- Autoclaving Procedure

Sterilization Method	Autoclave
Configuration	Wrap
Temperature	134 °C
Pressure	2.5 bar
Exposure Time	15 minutes
Dry Time	20 minutes

- Keep the NiTi Brush in the sterilization pouch (or Sterilization Wrap) to keep it clean until you use it.

[How to Disposal]

- Manage the NiTi Brush according to the rules and guidance of the disposal for disposable medical device.

[How to Storage]

- Recommended temperature for storage is 15°C~30°C.
- Recommended humidity is 1% ~ 75%
- Keep away from the sunlight.
- Do not load or store any other materials on the NiTi Brush package.

[Expiry date]: 5 years from manufactured date.

◆ PICTOGRAM

SYMBOL	DEFINITION	SYMBOL	DEFINITION
	MANUFACTURER		AUTHORISED REPRESENTATIVE IN THE EUROPEAN COMMUNITY
	BATCH CODE (LOT NO.)		CATALOGUE NUMBER (MODEL NAME)
	CAUTION		CONSULT INSTRUCTIONS FOR USE
	DATE OF MANUFACTURE		DO NOT REUSE
	NON STERILE		USE-BY DATE
	KEEP AWAY FROM SUNLIGHT		KEEP DRY
	WEEE		

Manufacturer;

HANS KOREA CO., LTD.
82-5, MUNWON-GIL, ILSANDONG-GU, GOYANG-SI,
GYEONGGI-DO 10254 KOREA
[Tel] : +82-31-977-2809
[Fax] : +82-31-976-2809

EC Representative;

OBELIS S.A.
Bd. Général Wahis, 53, 1030 Brussels, Belgium
Tel : +32 2 732 59 54,
Contact Person: Szymon Nowak-Rogozinski

◆ Document No.: HKIFU-001

◆ Revision date: 2017.07.31 (Rev. 1)



Global standard of peri-implantitis treatment protocol - NiTi Brush

HANS Korea Co., Ltd.

Head Office 82-5, Munwon-gil, Ilsandong-gu, Goyang-si, Gyeonggi-do, Korea

1st factory C 705, 158, Haneulmaeul-ro, Ilsandong-gu, Goyang-si, Gyeonggi-do, Korea

www.NiTiBrush.com info@nitibrush.com Tel +82 31 977 2809 Fax +82 31 976 2809